

St. Mary's School Newsletter

Catholic Schools - "Light the Way"

October 2009



Upcoming Events

- Oct. 2 – Marathon & Early dismissal for OHS Homecoming Parade
- Oct. 8 & 13 - Jr. High Conferences
- Oct. 10 – Carnival & Aluminum Can drive
- Oct. 12 – Home & School Meeting
- Oct. 14 – Grandparent's/Special Friends Day
- Oct. 15 & 16 - MN Education Days – NO SCHOOL
- Oct. 22 – Capital Campaign Reception
- Oct. 27 – School Board Meeting

Attendance:

Parents, *please* report a student absence or late arrival by calling the school office at 446-2300. Before school hours a message can be left on the answering machine.

From the Principal's Office

Many exciting events will be taking place at St. Mary's School this October. We start the month with the Catholic Marathon on October 2. This is St. Mary's second year taking part in the Marathon and we have made a few improvements. Students will walk on the paved walking trail starting at Morehouse Park after obtaining pledges from family and friends. What a great way to show the strength of Catholic Education in Owatonna. The Home and School Association will host the school carnival on October 10. I've heard this is the best carnival in town and I can't wait to experience it for the first time. Grandparents and Special Friends Day will be October 14. Thank you to parents and staff who have coordinated these events. Also, thanks to the Owatonna Knights of Columbus for supporting both the 7th grade field trip to Eagle Bluff and the 6th grade trip to Big Island Rendezvous.

I have been very impressed by the wonderful opportunities St. Mary's offers students and families. Equally impressive is the involvement of parents. It is a joy to see the parents in the building working hand and hand with teachers and students. If you are new to the school or just looking for the right opportunity to get involved, I have a few ideas for parents to partner with us. Please consider one of the following and give me a call if you have an interest. Throughout the year, I will be suggesting other areas for involvement. Connie Lembke will also be sending out requests via e-mail throughout the year.

- Book Fair Coordinator: organize two book fairs to take place during conferences
- Parish Displays: the school displays student work and/or school activities 6 times throughout the year. Teachers will organize the content and have it ready in the office.
- 8th Grade Slide Show Producer: teachers will take pictures throughout the year, but we could use some help putting together the slide show for graduation.
- 2010 Marathon Committee: a teacher committee currently works on this, but we could use some help running the event and coordinating student prizes.

The teachers and I are excited about the new assessment program at St. Mary's. We are currently testing students in grades 3-8 in both reading and math using the NWEA assessment. This assessment will replace the Iowa Tests of Basic Skills. The advantage of the NWEA is the immediate feedback and the ability to test three times during the school year to show growth. The data collected from this assessment will be used to improve instruction for our students. It will be a learning process for staff and we will be sharing scores with you at conferences.

Thanks for all you do for St. Mary's School. We could not operate without the support of our families and parishes. As I count my blessings this fall, I have all of you in my thoughts and prayers.

Mary Hawkins

School Pictures / Retakes

Lifetouch will return on **Thursday, Nov. 5**. Photographs will be taken of those who were absent on picture day in September or need retakes. Picture envelopes are available in the office. If you would like student pictures retaken, please follow the instructions in your picture packet

Grade 7 And 8 Conferences

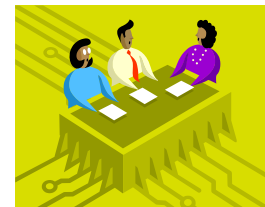
Mid-term Conferences for grades 7-8 will be held on Thursday, Oct. 8 and Tuesday, Oct. 13 from 3:30-7:30 PM. All 7 & 8th grade parents are urged to attend. Due to the After School Program in the cafeteria, conferences will be held in the **Junior High wing** in the following rooms and will not be scheduled:

1st Floor

Mr. Ostermeier - Room 107 (*Mrs. Henriksen's 6th grade classroom*) - Thursday, Oct. 8th only
 Mrs. Kuklok - Room 107 (*Mrs. Henriksen's 6th grade classroom*) - Tuesday, Oct. 13th only
 Mrs. Stewart - Room 108 (*Science Classroom*)
 Mrs. Prostrollo - Room 110 (*Mrs. Vieths's 6th grade classroom*)
 Miss Grose - Office by gym (Tuesday, Oct. 13th only)
 Mrs. Hawkins - Principal's Office (Thursday, Oct. 8th only)

2nd Floor

Mr. Smith - Room 207 (*Religion classroom*)
 Mrs. Nylund - Room 209 (*Math classroom*)
 Mrs. Slotsve - Mac Lab



Mom's In Touch

Attention Moms:

Did you know that St. Mary's and all teachers and students are prayed over each Friday morning at 8:05? The Moms-In-Touch prayer group meets in the Sacred Heart Nursery each Friday after drop off. We pray for student intentions, teachers, and any concerns pertaining to St. Mary's School. Not feeling like fixing your hair before school? Throw on a hat and grab your sweats. Small children are also welcome to play in the nursery while we pray. Contact Kris Tucker 455-0601 with any questions. *For where two or three are gathered together in my name, there am I in the midst of them. (Matthew 18:20)*

School Board Members

Sacred Heart

Mrs. Lori Jerpbak	451-1060
Mr. David Muler	451-3550
Mrs. Cheryl Rohwer	451-5449
Mr. Rich Gerdts	835-3283

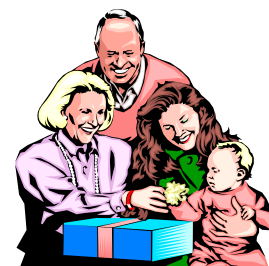
St. Joseph

Mr. Chris Herzog	451-2890
Mr. Phil Clubb	451-1049
Mr. Jed Ebner	455-2876
Mr. Jon Hanson	455-1689

Grandparents /Special Friends Day Wednesday, October 14, 2009

Schedule

- 8:40 a.m. Grandparents and Special friends gather in the **Sacred Heart Parish Center**. Your grandchild or special friend will meet you in the Parish Center
 - 9:00 a.m. Mass
 - 10:00 a.m. Refreshments sponsored by St. Mary's Home & School in Sacred Heart Parish Center
 - 10:45 a.m. Concert in gym
 - 11:30 a.m.- 1:00 p.m. Lunch/Open House
- Lunch is provided for all guests in the cafeteria. A free will offering can be made. For those with limited mobility, there is limited seating in Mrs. Stewart's room across from the main office.



Junior High Basketball

St. Mary's boys and girl's basketball will start the first week of November. St. Mary's basketball is open to any 6th through 8th grade boy and girl.

Basketball will have early and late practice times. Early practice times run from 3:30-5:00 PM and late practice from 5:00-6:30 PM.

NO Late Starts at SMS

St. Mary's School **will not** be participating in the six late start days by Owatonna District 761. The first late start is on Monday, October 5, 2009.

St. Mary's kindergarten

On October 5, the SMS kindergarten will be in session at the regular time (8:00-10:40 AM). Parents will need to provide transportation **both to and from school**.

St. Mary's Students grades 1-8

The school day begins at **8:00 AM as usual**.

Parents are asked to provide transportation **to school** on this day. It is hoped that parents will be able to carpool or find alternate transportation for their children. Be aware that busing is available for students to arrive at school at 10:00 AM if you cannot make other arrangements. Bus transportation is provided at the 2:40 PM dismissal.

The dates for District 761 late starts that St. Mary's is **NOT** participating are as follows:

October 5th, November 16th, December 7th, March 8th, April 12th, & May 10th

I thank you for your support of the educational programs at SMS.

Sincerely,
Mary Hawkins
Principal

Aluminum Can Drive

Saturday, Oct. 10th will be our Aluminum Can Drive. A truck will be parked in the parking lot. The money received will go towards our sports programs at St. Mary's.

Save Your Aluminum Cans All year

Owatonna Metal Recycling 1210 Industrial Road, Owatonna, (across from the Waste Treatment Plant) 451-1470 will collect aluminum cans for St. Mary's Sports Boosters all year. All you have to do is turn your cans in there and they will give you a slip. Take that slip to the office at the recycling center and they will keep track of the money owed to St. Mary's School. At the end of each month they will send St. Mary's a check for the cans collected.

Winter Clothing Drive



SMS will be an official winter coat drive drop site to benefit Steele County Clothesline. From October 4th thru November 1st you can leave clean children and adult sized **winter** coats, jackets, scarves, hats, mittens, and gloves that are in good condition in the boxes by junior high entrance.

Any questions, please call Clothesline Director, Mary Fink at 451-2550.

Parking & Drop Off

When you are visiting St. Mary's, please park your vehicles south of the Sacred Heart Parish Center or facing the basketball hoops. This will allow full use of the parking lot for our physical education classes and recess.

Please do **NOT** park in the bus-loading zone on Cedar Avenue. In order to maintain a safe drop off area for students, we will have signs placed on Marian Drive asking parents to limit traffic to one way going east to west. Please do not park on Marian Drive because traffic will be blocked. If you enter the parking lot from Oak Street, please park and walk your child into the building.

PLAY DATES HAVE CHANGED!!

If you are interested in being involved in the St. Mary's School Play, please note that the play dates have changed! The new dates for the play will be Friday and Saturday, April 9 & 10, 2010. This is a change from what was originally scheduled on your St. Mary's calendar.

If you have any questions, please contact Stacey Mulet. Thank you!

Nurses' Notes

By: Mary Herzog RN

Hearing and Vision Screening was held on Thursday, September 17th for grades 1-6 and 8 and on Friday, September 25th for the kindergarten class. Rescreening should be completed by October 30. If you do not receive a referral letter, then you can assume that your child had no problems. A special thanks to Anne Skalicky, Peggy Hanson, John Rohwer, Angela Donlon, Andrea Lembke, Jennye Savoie, Ruth Pfeifer, Susan Gebur, Amy Jo Havelka, Liz Malo, Sherry Rysavy, Ann Gander, Heather Lenz, Dawn Betti and Shari Pumper who volunteered on Thursday and Anne Skalicky Sue Gerdt, Katie Meiners, Ron Kubicek, Ann Gander and Andrew Bastyr who volunteered to help with the kindergarteners. Everything went very smoothly, thanks to you!! I couldn't have done it without you. St. Mary's has the best volunteers.

INFLUENZA AND H1N1

As you are already aware, the flu season has started early this year. Right now, H1N1 seems to be acting like seasonal flu in terms of how sick it makes people and how it is spread. Most people who have it have gotten better without complications. It **can** be a serious disease though and most people who have been affected by it are school-aged children. The people at high risk for complications are those with underlying medical conditions (heart, lung or kidney disease, asthma, diabetes or a suppressed immune system), pregnant women, children under 5 or people over 65.

The Minnesota Department of Health is recommending that people get their flu shots early this year. These shots are for the regular seasonal flu and are available **now**. They may provide slight immunity to the H1N1 virus. Shots for H1N1 will not be available until mid to late October.

Influenza is spread by coughs or sneezes. You can help prevent the spread of influenza at St. Mary's by taking the following important steps:

1. Keep your child home if they have symptoms of the flu. These are a fever of 100 degrees or greater, with cough and/or a sore throat. You should check your child each morning before sending them to school. Students with these symptoms will be sent home. Other symptoms that may occur with flu include runny nose, headache, body aches, vomiting and diarrhea (in addition to fever and cough or sore throat).
2. Sick children should stay home for at least 24 hours after their fever is gone without use of fever-reducing drugs like Tylenol or Motrin even if they are on anti-viral drugs such as Tamiflu or have a negative flu test. (Flu tests are not always accurate. Usually that means staying home for 5 to 7 days. Children should not come back to school if they are not well enough to participate in school activities, even if their fever has been gone for 24 hours. It is important that those staying home with flu symptoms avoid contact with others except to get medical care. This includes staying away from after-school and other activities. Do not use aspirin or aspirin-containing products when your child has influenza symptoms.
3. When calling school for absences, please let us know when they have flu-like symptoms.
4. Teach your child to cough or sneeze into their sleeve or a tissue. Teach them to wash their hands often with soap and water and avoid sharing personal items like drinks, food or eating utensils. I will be going into classrooms for the next couple months teaching good hand-washing techniques with Glo-Germs.
5. **If your child is at high-risk:** Contact your doctor immediately if they develop flu symptoms. Anti-virals should be started within two days of symptom onset. Also ask whether anti-virals are needed if your child has had close contact with others with others who have flu symptoms.

Please feel free to contact me if you have any questions. Mary Herzog RN 446-2300

Home and School

We are off to a great start this year. Thanks to everyone who has volunteered to be homeroom parents this year.

Our next Home and School meeting will be on Monday, October 12 at 7:00pm in the school cafeteria. It would be great to see you at our next meeting. Child care is available.

If you have any questions or concerns, please contact either Sara or Kim.

Sara Borgerding & Kim Degen
Home & School Presidents

sborgerding@hotmail.com / degen7@charter.net

St. Mary's Carnival News

Get ready for another great night at the carnival! The Carnival is intended as a night of **fun and fellowship**. We are looking forward to seeing you there! We have many exciting games and attractions planned. Some of them include The Goldfish Pond, Knights Castle and some returning games such as Plinko, Packer Passer, Fishing hole and the Cake Walk. The carnival will be **on Saturday October 10th from 4pm – 7pm**.

The theme this year is "Ghostly Gathering". Food will be available. We would greatly appreciate donated items to the General Store and The Cake Walk.

1. **General Store** - A few suggestions are Books for all ages, stickers, puzzles, board games, stationary, bubbles, playing cards, jump ropes, stuffed animals, and Misc. toys for boys and girls. **NEW ITEMS ONLY, PLEASE**. The General Store is the most popular game at the carnival and prizes go quickly. So please be generous when donating because prizes run out early.

2. **Cake Walk** - one or two cakes, pies, or baked goodies ... homemade go over the best, but we are not picky. These items can be brought to the school cafeteria on Friday October 9th from 4pm – 7pm or Saturday from 9 am – 12pm. Also please put your goodies on/in pans, tins that don't need to be returned.

3. In order to make the carnival possible, we ask every parent to donate at least one hour of time to work a booth or clean up.

Ticket Sales: Thursday 10-8-09 & Friday. 10-9-2009 at 7:30 - 8:00 am in hallway at St. Mary's. Presale tickets are 5/\$1.00. Tickets purchased the day of the carnival are 4/\$1.00.

Thank you for supporting this St. Mary's School family activity.

If you have any questions or comments regarding the carnival, feel free to contact any of the members of the carnival committee: Co-Chairs –Shelly Rohwer 528-2392, JoAnne Hartmann 446-8299 & Tammy Ginter 451-8929;



St. Mary's School
730 S. Cedar Avenue
Owatonna, MN 55060

www.stmarys-owatonna.org

507-446-2300 (phone)
507-446-2304 (fax)
507-456-5883 After School Program